

4618 14TH STREET, NW

Architectural Design Package

SUBMISSION TO ZONING COMMISSION

FEBRUARY, 2021



DRAWING INDEX

SHEET #	SHEET NAME
A.00.0	COVER SHEET
A.00.1	CONTEXT - ADJACENT NEIGHBORHOODS
A.00.2	VICINITY MAP
A.01	ZONING
A.01.1	COURTS
A.01.2	COMPREHENSIVE PLAN MAPS
A.01.3	EXISTING ZONING VS PROPOSED AMENDMENT
A.02.1	CONTEXT - NEIGHBORING USES
A.02.2	CONTEXT PHOTOS - 14TH ST
A.02.3	CONTEXT PHOTOS - ALLEYS
A.02.4	CONTEXT PHOTOS - 15TH ST
A.02.5	CONTEXT - PRECEDENT ALONG 14TH ST
A.03	TOPOGRAPHY DIAGRAM
A.04	DESIGN CONSIDERATIONS

SHEET #	SHEET NAME
A.05	EXISTING VS PROPOSED
A.06	14TH STREET VIEW
A.07	REAR ALLEY VIEW
A.08	DANCE STUDIO AT 14TH STREET
A.09	SITE PLAN
A.10	FIRST FLOOR PLAN
A.11	DANCE MEZZANINE
A.12	SECOND FLOOR PLAN
A.13	TYPICAL FLOOR PLAN (3-5)
A.14	PENTHOUSE FLOOR PLAN
A.15	ROOF PLAN
A.20	SITE SECTION
A.21	BUILDING SECTION
A.22.1	PENTHOUSE

SHEET #	SHEET NAME
A.22.2	PENTHOUSE
A.23	ALLEYS SECTIONS
A.24	14TH STREET ELEVATION
A.25	NORTH & SOUTH ELEVATION
A.26	EAST & WEST ELEVATION
A.27	NORTH ELEVATION
A.28	SOUTH ELEVATION
A.29.1	PARTIAL SOUTH ELEVATION - MATERIALS
A.29.2	PARTIAL 14TH STREET ELEVATION - MATERIALS
A.30	PERSPECTIVE VIEW - 14TH STREET
A.31	PERSPECTIVE VIEW - 14TH STREET
A.32	PERSPECTIVE VIEW - ALLEYS
A.33	PERSPECTIVE VIEW - ALLEYS
A.34	PERSPECTIVE VIEW - ALLEYS

SHEET #	SHEET NAME
A.35	PERSPECTIVE VIEWS - ALLEYS
A.36	PERSPECTIVE VIEW
A.37	PERSPECTIVE VIEW
A.38	PERSPECTIVE VIEW
A.39.1	SHADOW STUDIES
A.39.2	SHADOW STUDIES
A.39.3	SHADOW STUDIES
A.39.4	SHADOWS OVERLAP
A.40	LEED CHECKLIST
A.41	VEHICULAR CIRCULATION

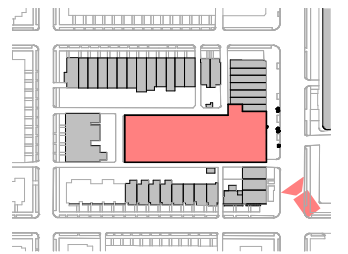
4618 14TH STREET, NW

COPYRIGHT © 2017 PGN ARCHITECTS, PLLC

COVER SHEET | A.00.0

02/03/2022

ZONING COMMISSION
District of Columbia
CASE NO.21-18
PGN ARCHITECTS



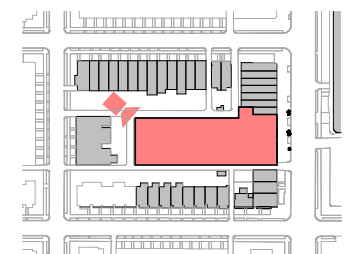
4618 14TH STREET, NW

COPYRIGHT © 2017 PGN ARCHITECTS, PLLC

14TH STREET VIEW | A.06

02/03/2022





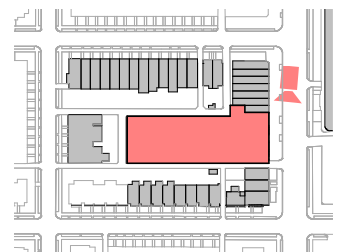
4618 14TH STREET, NW

COPYRIGHT © 2017 PGN ARCHITECTS, PLLC

REAR ALLEY VIEW | A.07

02/03/2022





KEYPLAN

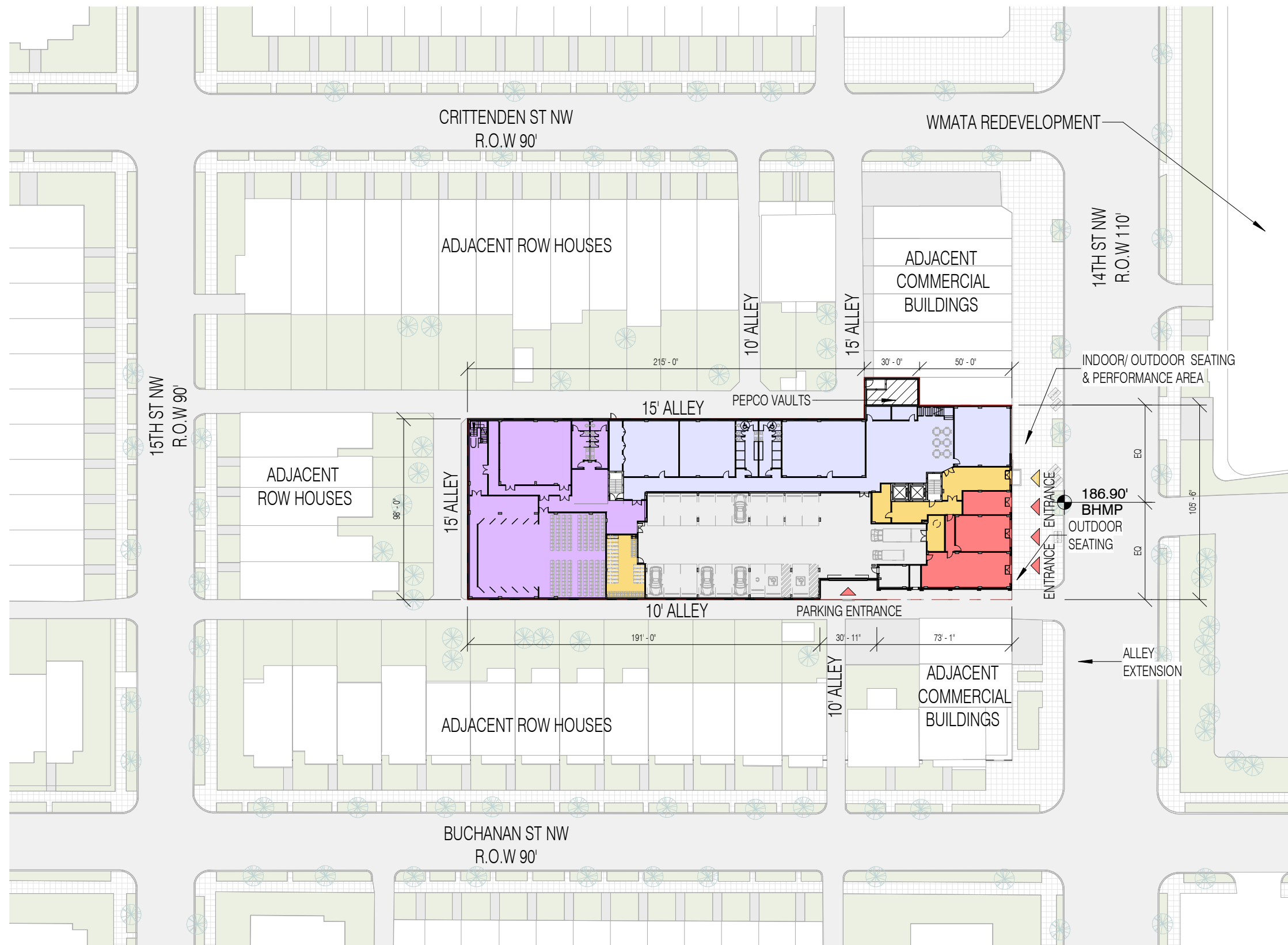
4618 14TH STREET, NW

COPYRIGHT © 2017 PGN ARCHITECTS, PLLC

DANCE STUDIO AT 14TH STREET | A.08

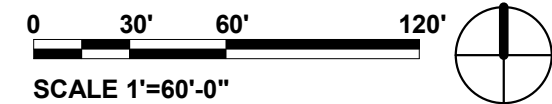
02/03/2022





4618 14TH STREET, NW

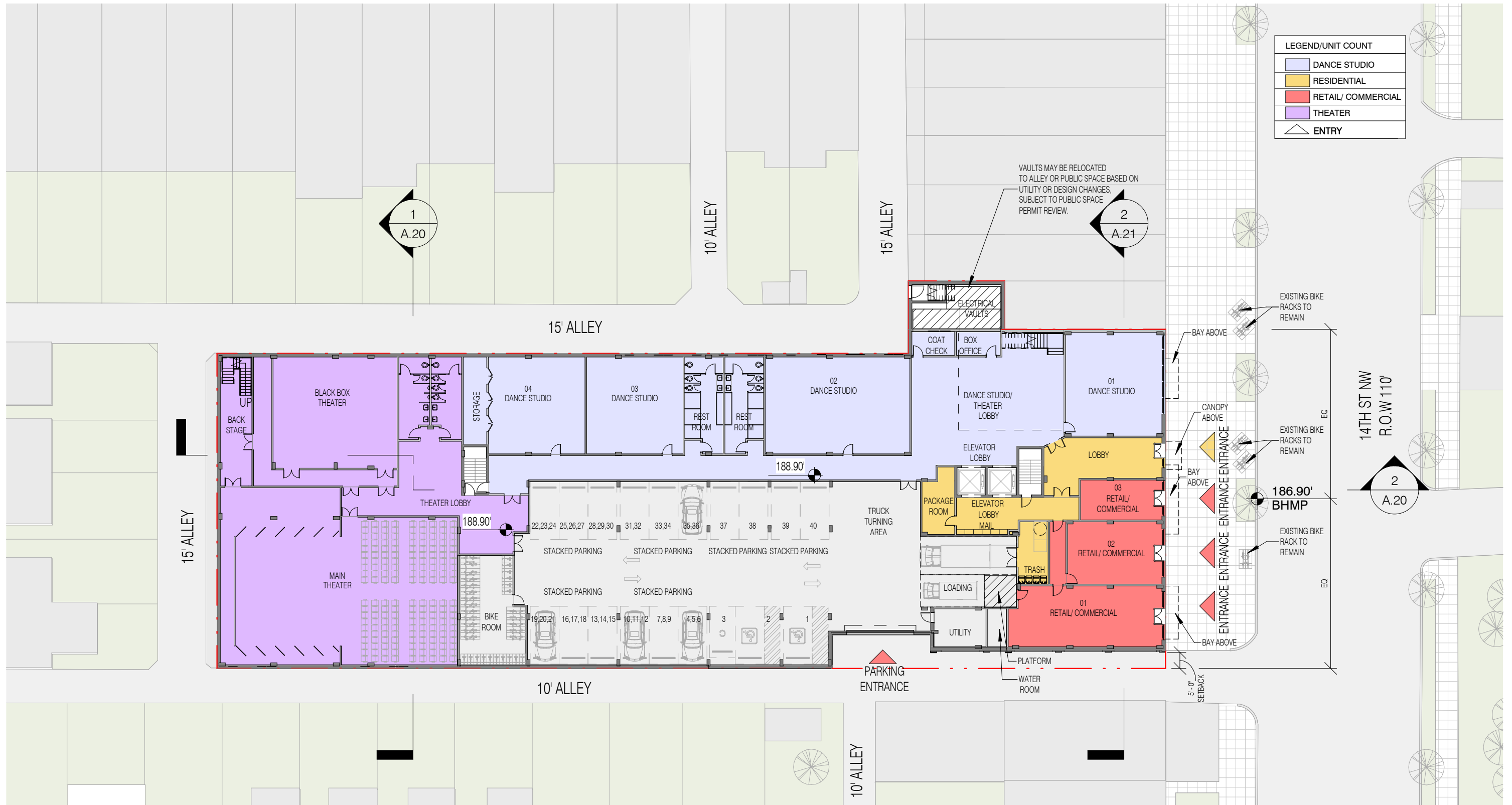
COPYRIGHT © 2017 PGN ARCHITECTS, PLLC



SITE PLAN | A.09

02/03/2022

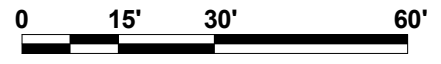




LEGEND/UNIT COUNT	
	DANCE STUDIO
	RESIDENTIAL
	RETAIL/ COMMERCIAL
	THEATER
	ENTRY

VAULTS MAY BE RELOCATED TO ALLEY OR PUBLIC SPACE BASED ON UTILITY OR DESIGN CHANGES, SUBJECT TO PUBLIC SPACE PERMIT REVIEW.

14TH ST NW
R.O.W 110'



SCALE 1"=30'-0"

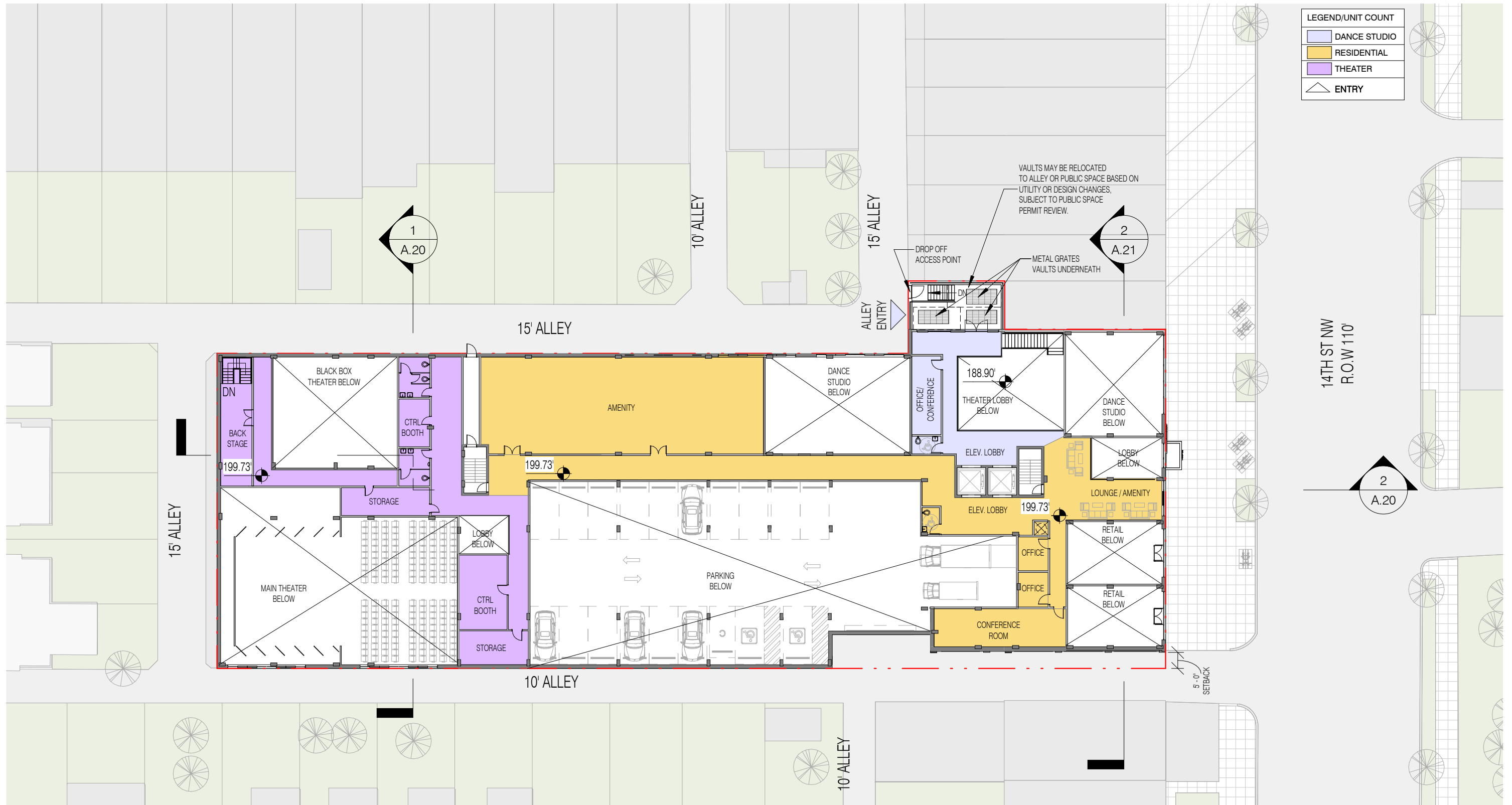
FIRST FLOOR PLAN | A.10

4618 14TH STREET, NW

COPYRIGHT © 2017 PGN ARCHITECTS, PLLC

02/03/2022





LEGEND/UNIT COUNT	
	DANCE STUDIO
	RESIDENTIAL
	THEATER
	ENTRY

VAULTS MAY BE RELOCATED TO ALLEY OR PUBLIC SPACE BASED ON UTILITY OR DESIGN CHANGES, SUBJECT TO PUBLIC SPACE PERMIT REVIEW.

DROP OFF ACCESS POINT

METAL GRATES VAULTS UNDERNEATH

15' ALLEY

15' ALLEY

10' ALLEY

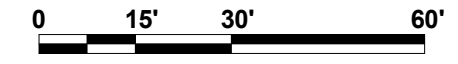
15' ALLEY

ALLEY ENTRY

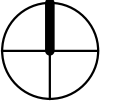
14TH ST NW
R.O.W 110'

10' ALLEY

10' ALLEY



SCALE 1"=30'-0"



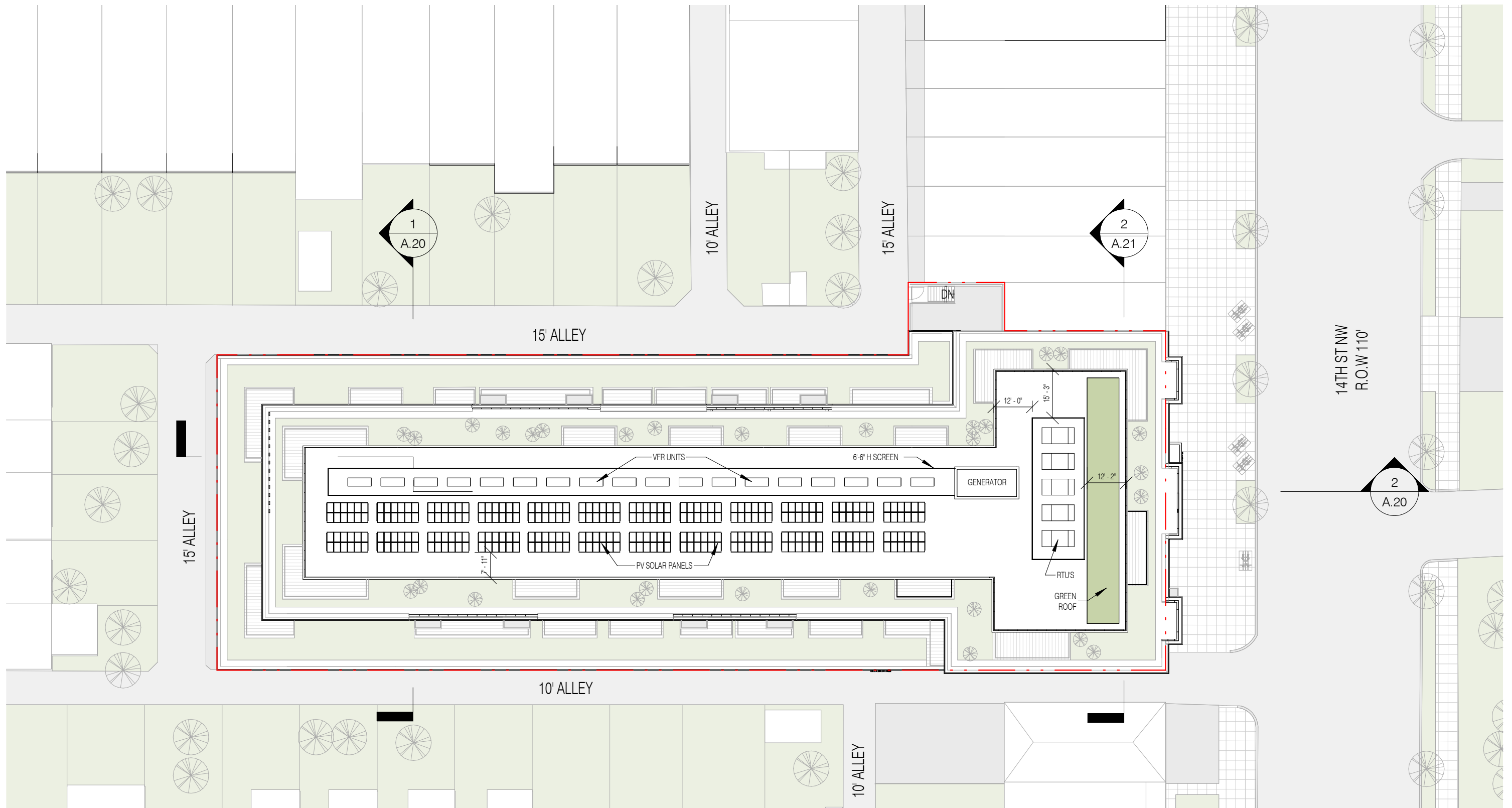
4618 14TH STREET, NW

DANCE MEZZANINE | A.11

COPYRIGHT © 2017 PGN ARCHITECTS, PLLC

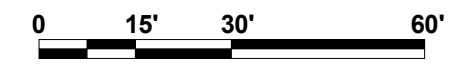
02/03/2022



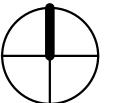


4618 14TH STREET, NW

COPYRIGHT © 2017 PGN ARCHITECTS, PLLC



SCALE 1"=30'-0"



ROOF PLAN | A.15

02/03/2022

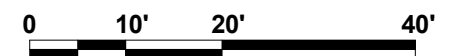
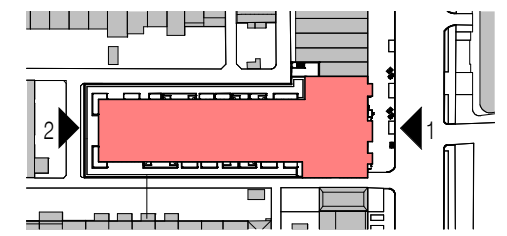




2. WEST ELEVATION



1. EAST ELEVATION



SCALE 1"=20'-0"

KEYPLAN

4618 14TH STREET, NW

COPYRIGHT © 2017 PGN ARCHITECTS, PLLC

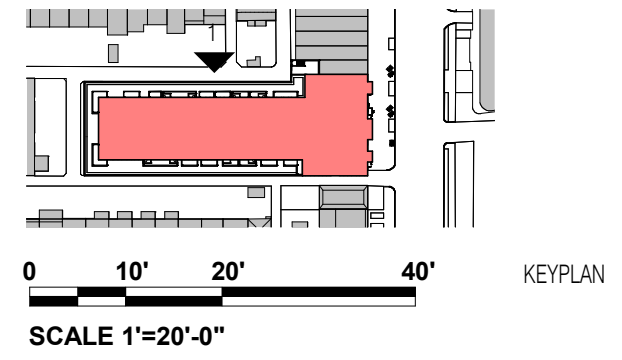
EAST & WEST ELEVATION | A.26

02/03/2022





1. NORTH ELEVATION



4618 14TH STREET, NW

COPYRIGHT © 2017 PGN ARCHITECTS, PLLC

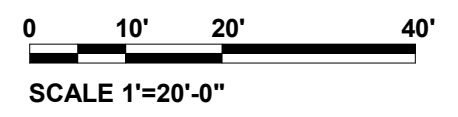
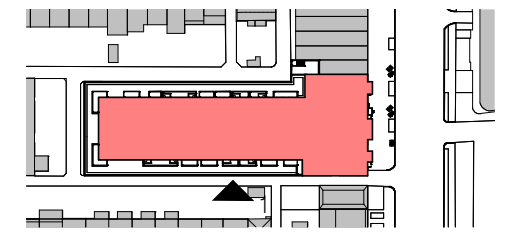
NORTH ELEVATION | A.27

02/03/2022





1. SOUTH ELEVATION



KEYPLAN

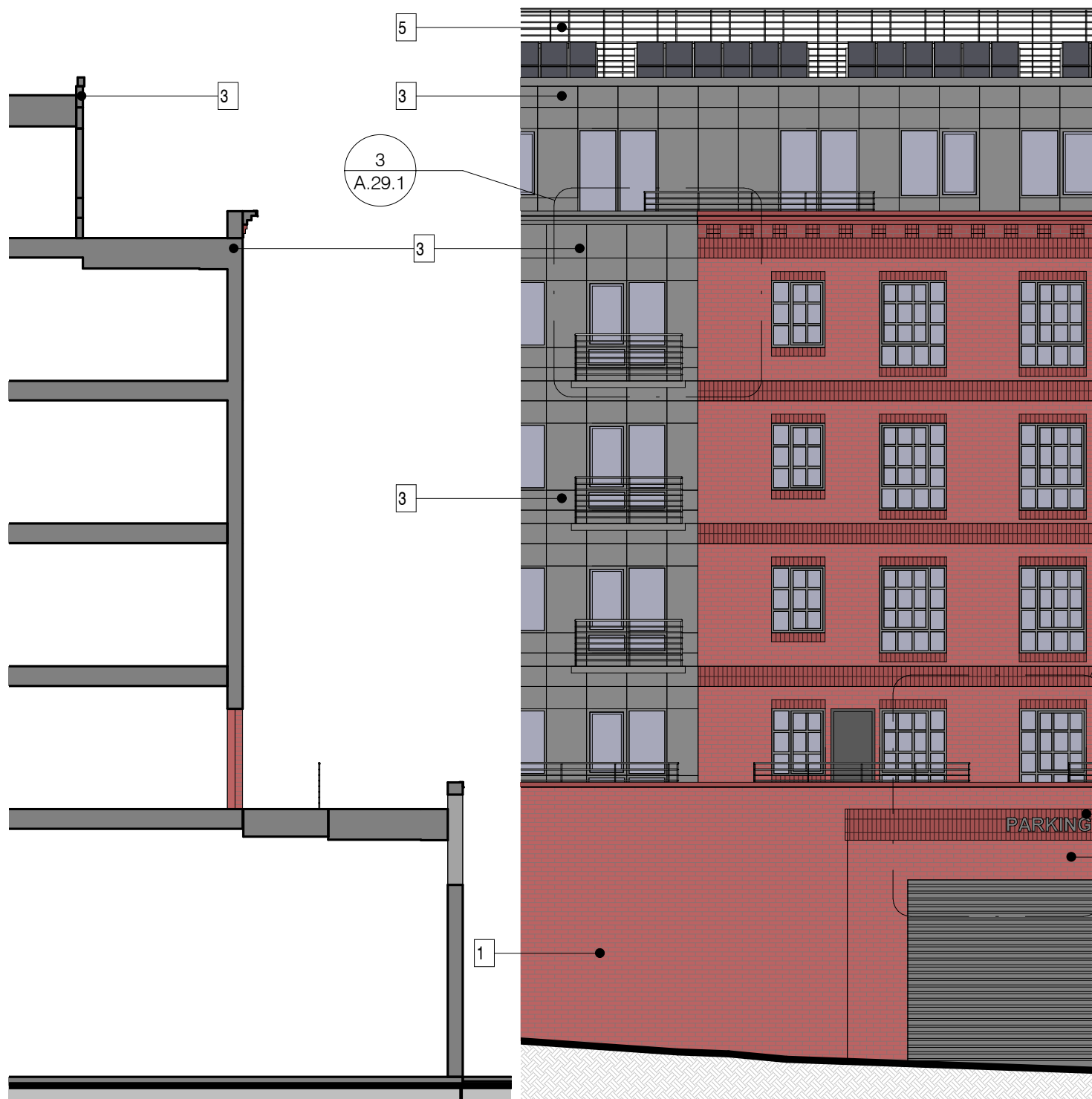
4618 14TH STREET, NW

COPYRIGHT © 2017 PGN ARCHITECTS, PLLC

SOUTH ELEVATION | A.28

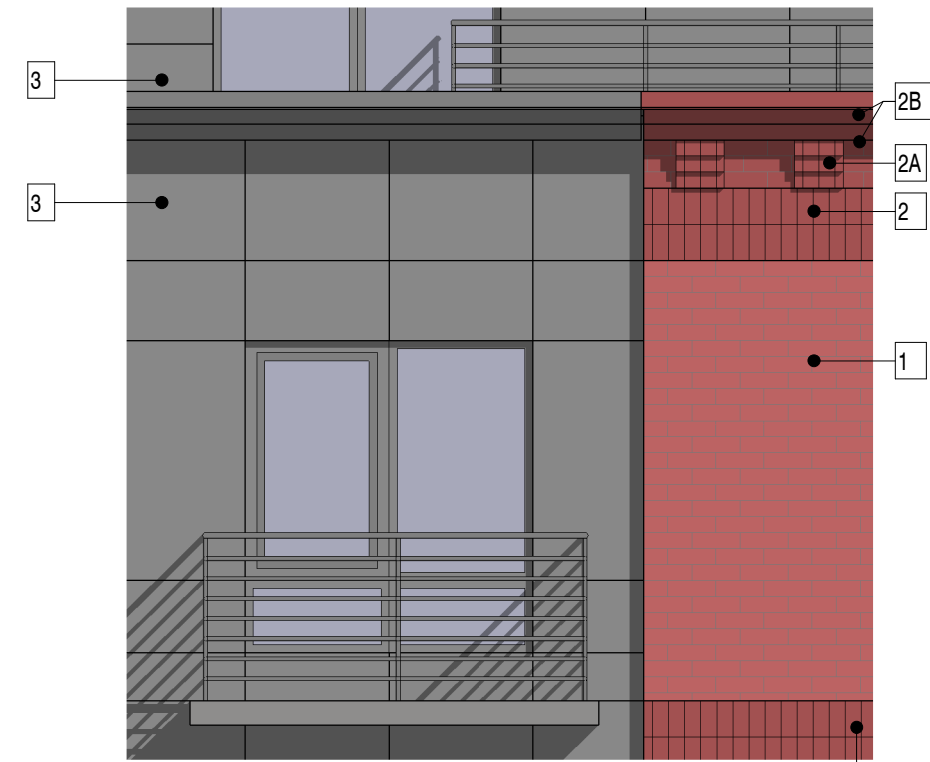
02/03/2022



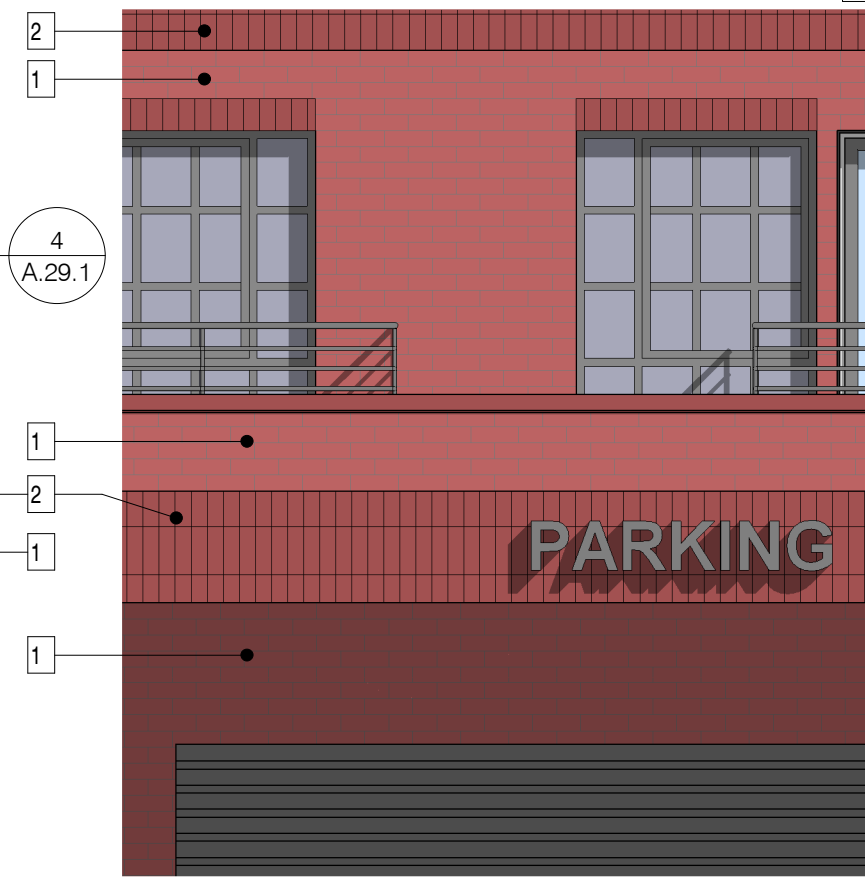


1. SETCTION

2. PARTIAL ELEVATION



3. DETAIL



4. DETAIL



1. UTILITY SIZE RED BRICK



2. CLOSURE RED BRICK - SOLDIER COURSE

2A. CLOSURE RED BRICK - BRACKETS

2B. RUNNING BOND - SAME ACCENT COLOR



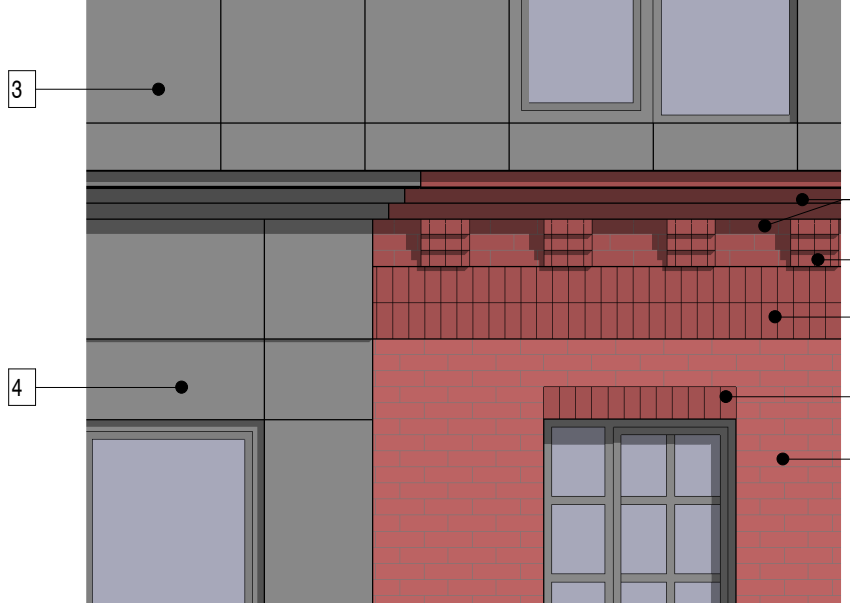
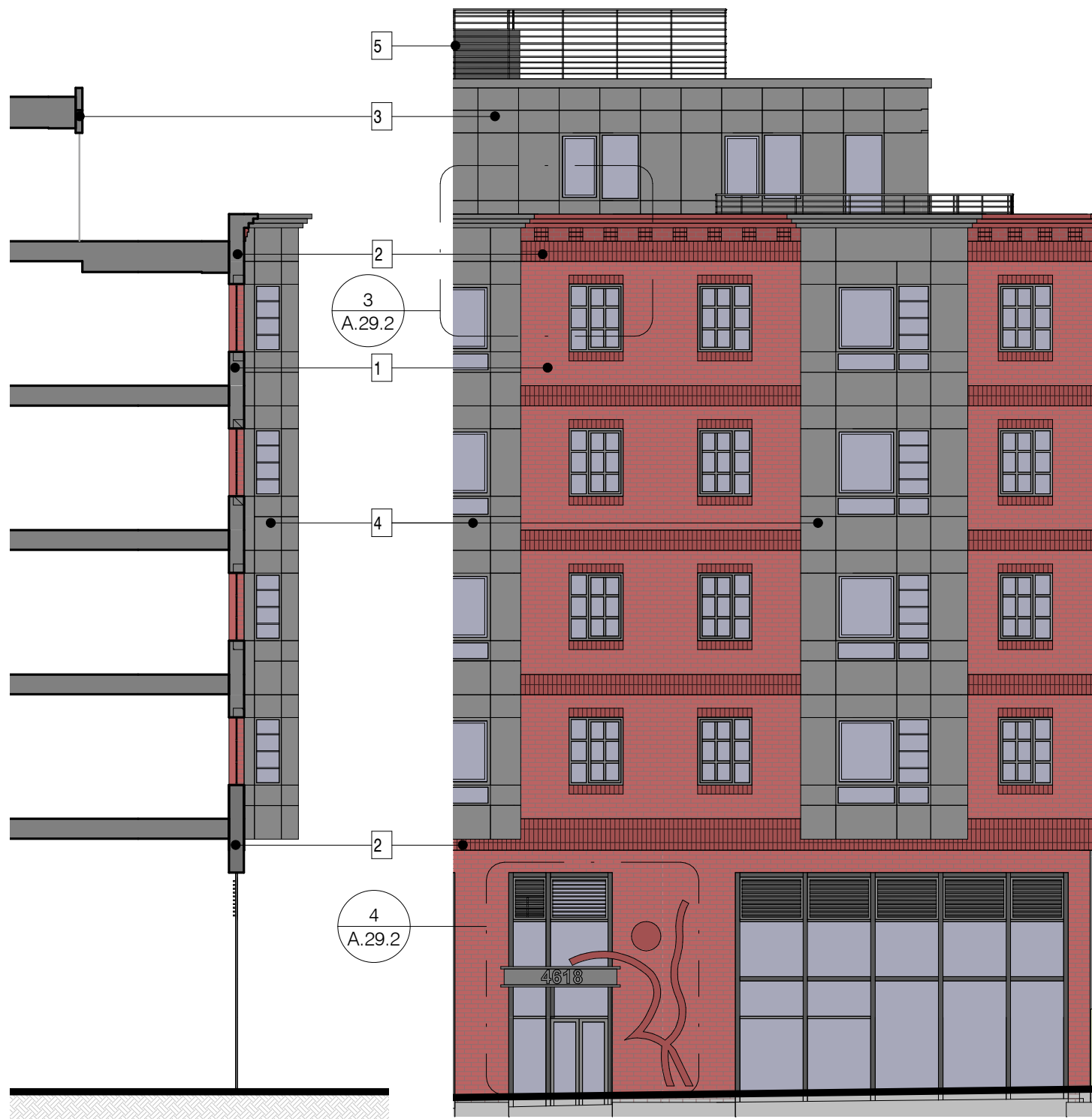
3. CEMENTITIOUS PANELS - GREY



5. PENTHOUSE EQUIPMENT - SCREEN

4618 14TH STREET, NW

PARTIAL SOUTH ELEVATION - MATERIALS A.29.1



1. UTILITY SIZE RED BRICK



2. CLOSURE RED BRICK - SOLDIER COURSE

2A. CLOSURE RED BRICK - BRACKETS

2B. RUNNING BOND - SAME ACCENT COLOR



3. CEMENTITIOUS PANELS - GREY



4. METAL PANELS - GREY



5. PENTHOUSE EQUIPMENT - SCREEN

1. SETCTION

2. PARTIAL ELEVATION

3. DETAIL

4. DETAIL

4618 14TH STREET, NW

PARTIAL 14TH STREET ELEVATION - MATERIALS A.29.2